

## Personal Shrines Workshop with Patrick Luber



Patrick Luber and workshop participants display their "shrines", February 21, 2009.

A late February snowstorm and awful driving conditions couldn't stop WDCC members and friends from showing up at Patrick Luber's mixed-media workshop at Mt. Mary College. Speaking as one of the attendees, it would be hard for me to believe there was a better way to spend that snowy day than in a warm classroom overflowing with assorted trash and treasures destined to become personal shrines.

Luber, a contemporary sculptor and fine arts professor at the University of North Dakota, was in town for the opening of his

show, Private Devotions, at Mt. Mary's gallery (through March 27). He led eight students through the process of creating one-of-a-kind, 3-D collages using drills, saws, glueguns, wire, fabric, paper, photos, and assorted memorabilia of every type. Surprisingly, it didn't matter what craft expertise each of us brought into the classroom; the day was all about creativity, playfulness, and stretching beyond what we ordinarily do. Not a bad way at all to brush away the mental cobwebs and dispel the winter gloom.

*Mindy Brooks, Program Chair*

3900 West Brown Deer Road  
Suite 130A  
Milwaukee, Wisconsin 53209



CELEBRATING EXCELLENCE IN CRAFTS  
SINCE 1916

VISIT OUR WEB SITE AT  
WDCC.ORG

## Membership Form

DUES EFFECTIVE JAN.-DEC.

Name(s) \_\_\_\_\_

Address \_\_\_\_\_

City \_\_\_\_\_

State \_\_\_\_\_

Zip \_\_\_\_\_

Phone (studio/work) \_\_\_\_\_

Phone (home) \_\_\_\_\_

e-mail \_\_\_\_\_

I am a  craftsperson  educator

collector  arts administrator

other \_\_\_\_\_

Media \_\_\_\_\_

### MEMBERSHIP CATEGORIES

\$45 Individual (1 year)

\$80 Individual (2 years)

\$75 Gallery/retail shop (1 year)

\$125 Gallery/retail shop (2 years)

\$75 Partnership – 2 artists  
working collaboratively on same body  
of work (1 year)

\$125 Partnership (2 years)

\$30 Full-time student

\$30 Senior citizen (65 and older)

\$350 Life member (one-time payment)

Make check payable to  
Wisconsin Designer Crafts Council  
and send to: WDCC,  
3900 W. Brown Deer Rd., Suite 130A,  
Milwaukee, WI 53209

## PRESIDENT'S MESSAGE



As we head toward spring and put the last snowfall behind us (hopefully), the art fair season is upon us again.

It seems the passage of time and advances in technology are increasing at lightning speed. I heard a statistic on the radio the other day that said a majority of us spend eight hours a day in front of a screen: computer, television, Blackberry, etc. It poses a challenge for us to use this to our advantage. How can we use the Internet as the tool kit it is rather than the "passive catalog" we may have relied on in the past? I know I have a long way to go. Those of you who were able to join us for the Annual Meeting in March heard our keynote speaker, Alyson Stanfield, share a few of her tips for navigating the cyber world and increasing your promotional efforts in that arena.

As for the state of crafts in this economic time... I quote Jane Milosch from the Smithsonian Institution as seen in Ornament Magazine: "Beautiful and useful works that are well designed and handmade connect to our humanity and everyday experience in a powerful way. The more time people spend in front of a television screen, the more we desire sensual things, to touch and be touched, whether it be sitting on a wooden chair, wearing felt slippers or a hat, or the weight and feel of a piece of jewelry against out skin. We have not outgrown Mozart or Beethoven and the same goes for a great chair or garment."

With that in mind I wish you great success and an enjoyable summer.

Fondly, Barb Chappell

## 2009 Upcoming Events & Workshops

WDCC will be offering a variety of opportunities for our membership in 2009. We hope you will be able to join us!

### GLASS WORKSHOP

Sunday April 19, 1-3

Join us for this exciting glass workshop at Hot Shop Glass, 239 Wisconsin Ave., Downtown Racine, WI. Cost \$35.00 per person. Participants will create a glass paper weight or ornament. Contact Mindy Brooks (mfkb@aol.com) if you are interested.

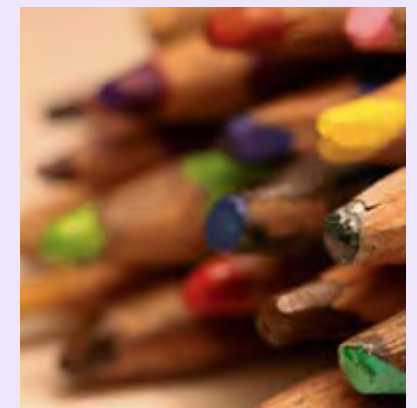
### METAL WORKSHOP WITH BETTY HELEN LONGHI

October 3-4, 2009

Join us for this exciting weekend with nationally recognized metalsmith, Betty Helen Longhi. Ms Longhi's work has been exhibited at the Virginia Museum, Delaware Art Museum, American Craft Museum, South East Center for Contemporary Art and the Renwick Gallery Museum Shop as well as numerous retail galleries.

In this workshop the techniques of shell forming and roll printing will be used to make a series of bracelets and cuffs from sheet metal. Students will experiment with ways to add texture and change the form of a metal pattern with the rolling mill. Students will gain a new insight into ways to manipulate sheet metal as well as creating a unique group of jewelry items.

Registration forms will be available later in April.



### SHIBORI DYEING WITH MARY MENDLA

October 3, 2009

We are pleased to have Fiber artist Mary Mendla offer a shibori dyeing workshop. Shibori is the Japanese word for a variety of techniques of shaping and securing cloth before dyeing known as bound resist. In this workshop, participants will explore various techniques of fiber dyeing and color discharge to create beautiful, colorful one of a kind silk scarves. No previous experience is necessary. Registration forms will be available later this summer.

### THE DIGITAL IMAGE – November 7, 2009

With the change from slide jurying to digital jurying many of you are wondering how to show your work to it's full potential. Photographer and WDCC Board Member Larry Sanders will present a workshop on November 7th on Zapp Image Review. This is an opportunity to review your images as seen by a zapp jury and receive valuable tips on how to present your work in the most effective way. Images should be e-mailed or sent to him on disk up to one week before the workshop at: 1522 W. Pierce St., Milwaukee, WI 53204.

# WDCC MEMBER SPOTLIGHT

Please keep us informed of your accomplishments. Submit information to WDCC, 3900 W. Brown Deer Rd., Suite 130A, WI 53209, or [fiberwood@aol.com](mailto:fiberwood@aol.com)

## Bravo To Our Members...

**Debra DeWolff's** colorful cuff bracelet of Felt and Polymer Beads was used in the print advertising for the "One of a Kind Show" in Chicago this past December. Her wild, colorful multi bead on bead bracelets were featured on the carry bags that were given to all attendees.

**Laura Timmons** polymer clay art was chosen for the cover of Key magazine in September 2008.

**Sybille Hamilton's** whimsical dimensional wall art of water faucets with strings of polymer beads, were featured in the Encore section of the October 19, 2008 Milwaukee Journal/Sentinel.

**Mark Fisher** has won several ribbons this year, but the greatest honor was a first place ribbon at Santa Fe Indian Market for his work entitled "Turtle Clan Teacher". It represents the old way(staff) and the new way(books) of teaching and represents the importance of culture, education and imagination.

As part of The Kenosha Art Association's Spring Event **Paul Hapip** presented a talk/ slide show entitled "Treasures of Asia" at the Kenosha Public Museum. The presentation featured hunting for gemstones (including visits at the mines) and the regional flora inspiring Paul's jewelry designs.

## Welcome to our New Board Members...



### Membership Chair – Kristin Gereau

After graduating from the Rhode Island School of Design in 2002 with a degree in Textiles, Kristin began her career as a professional artist. She started K.Gereau Textiles in 2003 and participated in her first trade show that same year. Her knitwear designs have won numerous awards and have been featured in magazines and are sold from some of the most prestigious boutiques across the United States. Many of you also know Kristin and her work with Larry Sanders Visual Images. In 2009 Kristin will continue to grow her business (KGTextiles.com) while bringing her energy and work ethic to the Wisconsin Designer Crafts Council in the position of Membership Chair.



### Treasurer – Sarah Mann

Sarah began her crafting pursuits here in Milwaukee and sought to explore them over the subsequent 20 years-in St. Louis as a student, in New Orleans working among its thriving community of artists and then absorbing the dynamism of New York City in her loft studio. Three years ago, Sarah moved herself, daughter and metalsmithing business back to the friendliness and beauty of the midwest. Sarah has found it to be a wonderful experience to return to her roots and deepen relationships with the welcoming community of artists here. She looks forward to furthering her craft as a sterling silver jeweler in Wisconsin and adding her unique talent to the Wisconsin Designer Crafts Council in the position of Treasurer. For more information about Sarah and her work please see [mannstudio.com](http://mannstudio.com)



Alyson Stanfield presents promotional tips to members at the annual meeting.

## Have you paid your 2009 dues?

If you have yet to send in your membership dues for the 2009 season you will be missing out on another great year of WDCC programs and events. Members also receive discounted booth fees for the Morning Glory Fine Craft Fair and the opportunity to sell their work in the Morning Glory Gallery. Please use the renewal form on the back of this newsletter. We look forward to hearing from you

## In Memoriam: Leslie Brockel Hamilton

In Memoriam: Leslie Brockel Hamilton passed away March 22, 2009. Leslie was a longstanding member of WDCC and had an enormous influence in the organization. Back in 1975, Leslie, along with Margaret Rahill, former curator of the Charles Allis Art Museum, decided to hold an art fair on the grounds of the Allis Museum on Milwaukee's east side. This was the beginning of the Morning Glory Art Fair and 35 years later the tradition continues. We honor her memory and offer our condolences to all who knew her. Look for a tribute to Leslie at our Morning Glory Fair this summer.

## Morning Glory Gallery Celebrates Third Anniversary This Summer!

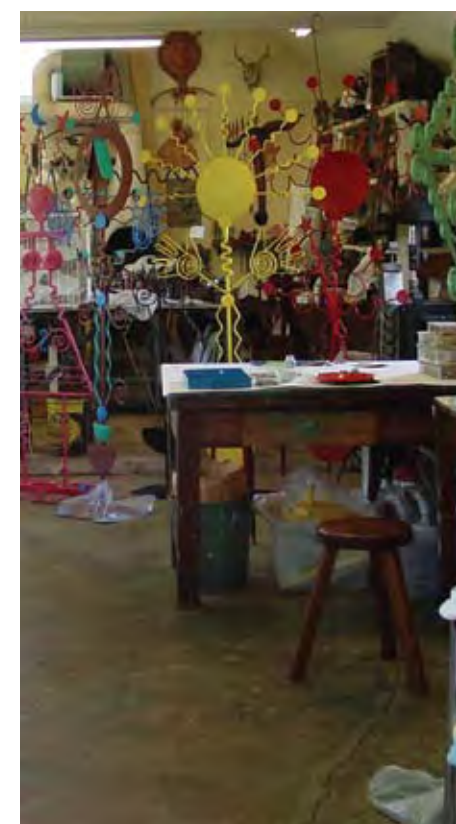


We are proud to share positive news about our Morning Glory Gallery at Milwaukee's Marcus Center for the Performing Arts. Since its inception, the Gallery has received rave reviews for its high-quality selection of original artwork created by WDCC members. We are very fortunate to collaborate with the Marcus Center in the operation of the Gallery inside the Marcus Center lobby. This unique venue truly represents a dynamic and creative synergy - the performing arts in partnership with fine crafts.

The Gallery was established in July of 2006, and this summer we will be celebrating our third anniversary. Since that time, the Gallery has repeatedly met its annual sales goals. And despite our current challenging economy, overall sales for 2008 surpassed those of 2007, with the new year starting out very strong in sales. The Gallery continues to represent about 50 of our members who are selected during a semi-annual jurying process. All work is on consignment and artists receive 55% of the purchase price. (The next jurying process will be held in the fall.)

Regular Gallery hours are Thursday, Friday and Saturday from 12 noon until 6 p.m. and on evenings and weekends during performances in Uihlein Hall. The Gallery is also a special destination during Milwaukee's popular Gallery Night & Days, held quarterly each year. The next Gallery Night & Day weekend is April 17-18 when work by Nana Schowalter of Blanchardville, Wis. will be featured. Nana is a longstanding WDCC member who is an accomplished blacksmith. Her unique and colorful outdoor sculptures are a refreshing addition to anyone's garden, and also work well indoors. Nana has been creating a new line of whimsical sculptures especially for Gallery Night & Day, so please be sure to visit.

If you are interested in volunteering to work in the Gallery during one of the performances of the Milwaukee Ballet, Milwaukee Symphony, Florentine Opera or Marcus Broadway Series, please call the Gallery directly at 414.765.7227 to ask about available volunteer shifts. Volunteers are paired with paid staff members during show times, and you are offered the chance to go in to see or hear the performance for free.



A peek inside Nana Schowalter's studio.

## Mark your Calendars

This year's 35th Annual Morning Glory Fair will be held August 8-9 on the grounds of the Marcus Center for the Performing Arts and Red Arrow Park in downtown Milwaukee. This year was the first year we used the Zapplication jury process and the consensus from most artists, jurors and the show committee is very positive. Thanks to Hazel Wheaton and Kalmbach publishing for providing the technical equipment and facilities for the jurying. This year's jurors were Terri McCarthy, jeweler and owner of Terri McCarthy Studios, Gerilyn Frick, owner of Murray Hill Pottery, Nancy Crawford and Helena Ehlke, coordinator of Scholastic Awards at the Milwaukee Art Museum.

Jury results were available April 1st.

We also have plenty of volunteer opportunities at the fair. Please let us hear from you. Contact Bonnie Joseph Coonan [joseph-coonan@att.net](mailto:joseph-coonan@att.net) We couldn't do the show without your help and it's a fun way to spend a few hours.

## 2008-2009 WDCC Board of Directors

### OFFICERS

President – Barbara Chappell  
414-302-1849  
[fiberwood@aol.com](mailto:fiberwood@aol.com)

Vice President –  
Sybille Hamilton  
414-527-0883  
[sybille1@earthlink.net](mailto:sybille1@earthlink.net)

Secretary – Ann Cook  
414-383-0388  
[anncook@earthlink.net](mailto:anncook@earthlink.net)

Treasurer – Sarah Mann  
414-332-9008  
[smannstudio@aol.com](mailto:smannstudio@aol.com)

Membership – Kristin Gereau  
414-672-6727  
[kgtextiles@hotmail.com](mailto:kgtextiles@hotmail.com)

Morning Glory Fine Craft Fair –  
Barbara Heimsch  
414-259-1440  
[bheimsch@wi.rr.com](mailto:bheimsch@wi.rr.com)

Publicity – Christine Strobel  
608-848-8477  
[johnchristine@inexpress.net](mailto:johnchristine@inexpress.net)

Programs – Mindy Brooks  
414-453-8625 [mfbk@aol.com](mailto:mfbk@aol.com)

Volunteers –  
Bonnie Joseph-Coonan  
414-351-3729  
[joseph-coonan@att.net](mailto:joseph-coonan@att.net)

### DIRECTORS AT LARGE

Polly Daeger  
Ilze Heider  
Ian Pritchard  
Larry Sanders  
Hazel Wheaton

Morning Glory  
Gallery Manager  
Barb Caprile  
414-962-7002  
[bcaprile@ameritech.net](mailto:bcaprile@ameritech.net)